

# THE GLENFARG NEWSLETTER

**Issue 227 December 2016**



## **Inside this issue**

**Maspie Den - The Pontonine Wall - Christmas Cake**

**The Grand Prize Christmas Quiz**

**Suggested Donation £1**

# Contents

Contacts.....	3
Editorial.....	5
Diary of Events.....	7
Village Hall Calendar.....	8
Arrgask Church News .....	10
The Avenue.....	11
Maspie Den.....	14
Chris Mcleish.....	16
Edan the pony.....	20
G&D In Bloom.....	22
Glenfarg Folk Club.....	24
Baby & Toddler Group.....	25
W.R.I.....	27
Community Cinema.....	30
Remembrance Sunday.....	31
Lady Margaret Statue/GOBS..	32
MacMillan Coffee Morning.....	35
Poppy Scotland.....	36
Christmas Quiz.....	37
The Viewpoint Sign.....	42
Scouts.....	44
The Pontinine Wall.....	46
Celebrating Success.....	49
Christmas Cake.....	50
Consultation.....	52 ..
Winter Advice.....	55
Glenfarg CC Minutes.....	57
General Information.....	76

The views expressed by contributors to this newsletter are entirely their own. Publication within this newsletter does not imply that the Editors or Community Council agrees with, or supports, those views. The editors will not be held responsible for any factual inaccuracies, or incorrect inferences drawn.

## Advertise In The Glenfarg Newsletter

You can advertise in the Newsletter for very reasonable rates as below which are annual i.e. 6 issues.

Full Page £70 per annum

Half Page £35

Quarter Page £20

Single issue advert prices available on request.

Advert enquiries should be made by initially contacting the editorial team.

### Editor

newsletter@glenfarg.org

Robin Watson 830 355

### Treasurer

Daniel Horsman 830 067

### Distribution

Glenfarg Village Store 830 201

### Cover Photograph

by the editor

### **DEADLINE FOR NEXT ISSUE**

We always try our best to make sure that your newsletter is available promptly at the start of every even month. If you would like to contribute to the next issue, please inform us with details by the 1st of January to allow us adequate time to plan the issue. Contributions should reach us by 15th of January. **Thank you.**



# Contacts

Service/Organisation	Contact Name/ Email Address	Telephone
<b>Community Council</b>	Chairperson: Margaret Ponton	830 611
	Secretary: Lesley Warder secretary@glenfarg.org	830 692
<b>P&amp;K Councillor</b>	Cllrs. Barnacle, Cuthbert, Giacopazzi and Robertson	See P&KC website
<b>Police</b>	Non emergency contact number	101
	Crimestoppers	0800 555 111
<b>Household Utilities</b>	Scottish Water Helpline	0800 0778 778
	Scottish Hydro Electric Helpline	0800 300 999
<b>Dog Warden</b>	Kirsteen Mackenzie	01738 476476
<b>PA Contact</b>	Catherine Fairweather	830 340
<b>Arngask Church</b>	Bill Macpherson (Session Clerk) Session.Clerk@abernethydronarng askchurch.org	830 430
<b>Arngask School</b>	Marie Connor (Head Teacher)	867 250
<b>Accordion &amp; Fiddle</b>	Russell Robertson	830 642
<b>Baby &amp; Toddlers</b>	Donna Smith	07535 595 430
<b>Badminton Club</b>	Alan Clark	830 246
<b>Dance Connect</b>	Rachel Webb	07760 972 359
<b>Beavers</b>	Jan Pedley glenfargbrownies@gmail.com	830 195
<b>Bowling Club</b>	Janet Ewart, Kinross janetewart@btinternet.com	863 929
<b>Bridge Club</b>	Sheila Harley	830 319
<b>Cubs</b>	Christine Morton	830 210
<b>Curling - Men's</b>	Arthur Jenkins	830 453

<b>Curling - Women's</b>	Margaret Jenkins	830 453
<b>Folk Club</b>	David Aird	830 370
<b>Football</b>	Alan Fairweather	830 851
<b>GDIB</b>	Kate Armstrong	830 343
<b>Glenfarg Oil Buying Syndicate</b>	Dave Arnold kadavar@waitrose.com	830 136
<b>Knit &amp; Natter</b>	Ineke Watt	830 345
<b>Kinross-shire Time Exchange</b>	Linda McKeen time-exchange@kinross.cc	07469 758 984 07510 380 603
<b>Ladies' Badminton</b>	Annette Eadie	830 547
<b>Matthew Dance Academy</b>	Nikki Mathew	07869 120 989
<b>Neighbourhood Watch</b>	Linsey Penman	830549
<b>Old Folks Association</b>	Christian Meldrum	830 437
<b>Rainbows, Brownies &amp; Guides</b>	Jan Pedley glenfargbrownies@gmail.com	830 195
<b>Red Cross</b>	British Red Cross, Perth	0844 412 2808
<b>Riding for the Disabled</b>	Angela Stocks	830 262
<b>Scouts</b>	Andrew Vaughan	830 128
<b>Soup &amp; Chat</b>	Lindsay Kinnaird	830 337
<b>SWI</b>	Margot Moran	850 211
<b>Tennis Club</b>	Tim Corcoran tim@taraw.plus.com	830 879
<b>Village Hall</b>	Tanya McKibbon	830 156
<b>Website</b>	Janet Watson <i>editor@glenfarg.org</i>	830 355
<b>Wine Club</b>	Steve Mee	830 395
<b>Yoga</b>	Caroline Waring	830 239

# Editorial

The super moon has come and gone (pictured here taken from my window) and we are heading remorselessly towards Christmas.

Lots of things are happening in Glenfarg this Christmastide. The Village Store is putting on a Christmas party and a New Year's Eve party both in the Village Hall. All details are to be found on page 29. Mark (the shop) suggested that the Newsletter should have a page celebrating the success of Glenfarg residents. The response from the Grapevine request for entries was quite considerable and their stories are in this issue.

Jim Ashton has another article on walks in the surrounding area. This walk is the Maspie Den, Falkland.

There are celebrations at the Ponton household where the famous bottle wall has finally reached completion. Read about this saga on page 47.

The cinema's Christmas film is the hilarious "Eddie The Eagle", a comedy based on the true story of Eddie Edwards.

I have taken over as quizmaster for the Grand Prize Christmas Quiz. Many thanks are due to the previous holder of this office, Dave Arnold, who was very helpful in arranging for the sponsorship from Oilfast, the main supplier for GOBS (see page 32).

To all the regular contributors I send many thanks for your help in preparing the Newsletter throughout the year. Thanks go to Kate Armstrong, Jenny Holt-Brook, and Andrew Vaughan for invaluable help in proofreading. From all the staff here at the newsletter office may your Christmas be warm and safe and your New Year an adventure.

Robin Watson

*e-mail: [newsletter@glenfarg.org](mailto:newsletter@glenfarg.org)*



# Glenfarg Windows

**WINDOWS | DOORS | CONSERVATORIES**

**SUNROOMS | FASCIAS | SOFFITS | GUTTERS**

**FULL RANGE WITH SUPPLY ONLY OR SUPPLY & FIT**



**GREAT PRICES, DISCOUNTS AVAILABLE!**

**CONTACT KEVIN WHYTE, 17 ELM ROW, GLENFARG**

**01577 830269 | 07802 821583**

**kevin57whyte@mail.com**

# Diary Of Events

Date	Event	Where
3rd December	Arngask Church Christmas Sale	10am-Noon Village Hall
5th December	Folk Club - North Sea Gas	Backstage at The Green
9th December	Community Cinema Eddie The Eagle	7.30pm Village Hall
12th December	Folk Club The Farg Folk	Backstage at The Green
17th December	Christmas Party (See page 29)	7pm Village Hall
19th December	Folk Club - Singaround	Backstage at The Green
21st December	Kinross High School Christmas Concert	7pm Community Campus
25th December	Christmas Day United Service	11am Kirk of St Bride Abernethy
31st December	New Years Eve Party (see Page 29)	7pm Village Hall
9th January	Community Council Meeting	7.30pm Village Hall
13th January	Community Cinema The Birdcage	7.30pm Village Hall
16th January	Folk Club - Saltire Davy Vernon & Alex Hodgson	Backstage at The Green
23rd January	Folk Club - Burns Singaround	Backstage at The Green
28th January	Scouts Burns Supper	Village Hall 7.30pm

# A Village Hall for All

A quick guide to regular village hall activities. Does anything take your interest?

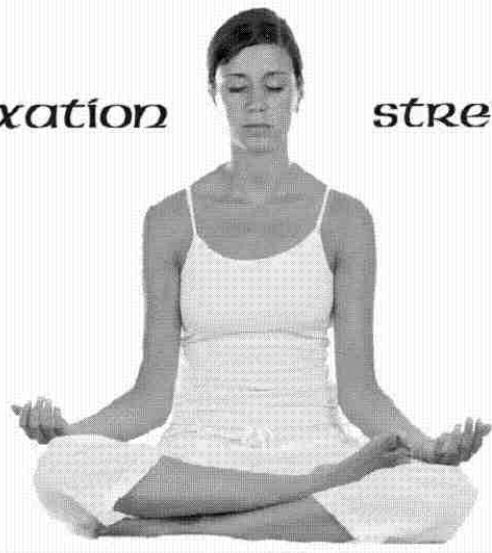
Day	Time	Organisation
Monday	6.00pm - 7.30pm	<b>Cubs</b>
	8.00pm - 10.00pm	<b>Ladies' Badminton</b>
Tuesday	5.15pm - 6.15pm	<b>Beavers</b>
	7.00pm - 8.00pm	<b>Zumba Gold</b>
Wednesday	9.30am - 11.30am	<b>Baby &amp; Toddler Group</b>
	6.00pm - 7.00pm	<b>Rainbows</b>
	6.00pm - 7.30pm	<b>Brownies</b>
	6.00pm - 8.00pm	<b>Guides</b>
	8.00pm - 10.00pm (In winter)	<b>Badminton</b>
	12.30pm - 1.30pm 1st Wed of month	<b>Soup and Chat</b>
	7.00pm - 11.00pm	<b>Accordion &amp; Fiddle Club</b>
Thursday	7.30pm - 9.00pm	<b>Scouts</b>
2nd Thursday Sept to May	7.30pm	<b>WRI</b>
Friday	10.00am - 11.00am	<b>Chair Exercise</b>

To check on the Village Hall bookings, go to the village website  
[www.glenfarg.org](http://www.glenfarg.org)  
 and look at the on-line calendar under 'Hire the Hall'

*tune into your inner music*  
**yoga**

*relaxation*

*stretching*



*every tuesday  
in the  
glenfarg village hall*

**7pm - 8pm**

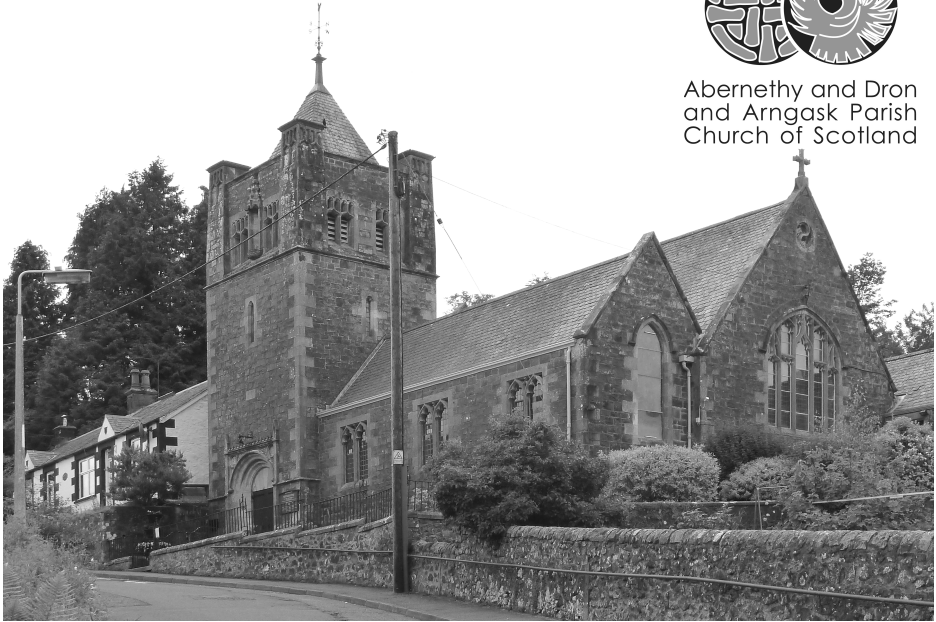
Chair Class every Friday 10-11am

**contact caroline 01577 830 239**

# Church News



Abernethy and Dron  
and Arngask Parish  
Church of Scotland



We continue the search for our new minister and we are grateful to have the continuing support of our Locum Minister the Rev Douglas Main. He can be contacted on 01738 860867 or by e-mail

[Minister@abernethydronarngaskchurch.org.uk](mailto:Minister@abernethydronarngaskchurch.org.uk)

The Church will be holding its annual Christmas Sale on Saturday 3<sup>rd</sup> Dec in Glenfarg Village Hall 10.00 – 12.00 with all the usual stalls, Christmas Hampers and refreshments.

As we approach Christmas please note the service arrangements for this period:

18<sup>th</sup> Dec Church Service Arngask Church 11.00am

18<sup>th</sup> Dec Chris Cringle Service Arngask Church 6.30pm

24<sup>th</sup> Dec Carol Service tbc

24<sup>th</sup> Dec Watchnight Service Arngask Church 11.30pm

25<sup>th</sup> Dec Christmas Day united service Kirk of St Bride, Abernethy 11.00am

Wishing everybody in our community and beyond a very Merry and Peaceful Christmas.

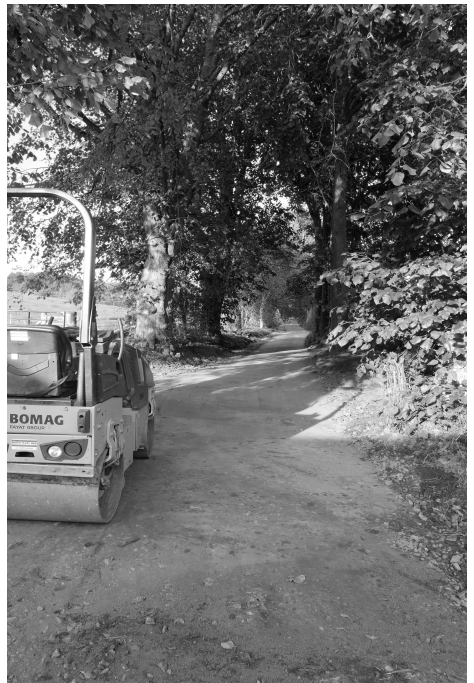


# The Avenue

Have you visited The Avenue recently? The Avenue is the tree-lined path linking Greenbank Road near Hayfield Rd to the end of Greenbank Crescent. It has been used for generations both as an access route and as a pleasant walking area. Over the years John Crawford, the owner of the land, has cleared undergrowth and removed yew trees as they are poisonous to horses. Recently, flooding has often made The Avenue impassable, seriously affected residents with houses adjoining the path and disrupted drainage in Greenbank Road. School pupils have been forced to walk to and from school along the busy road, which often carries heavy traffic. Or parents have preferred to drive them to the school, causing traffic congestion near the school entrance.

It seemed that these problems required a larger project than could be expected of the owner. The Community Council approached P&KC, but they were unable to carry out work on privately-owned land. The obvious people to ask to take on the project were the charity registered organization TRACKS (The Rural Access Committee of Kinross-shire).

Two concerned parents pursued this avenue (no pun intended!) and George Lawrie from TRACKS put together the Arngask School Travel Plan as part of the Safe Routes to School scheme. The plan involved resurfacing and improving the drainage in The Avenue and creating an extension to the path leading to the school, to make it a suitable walking / cycling route. George consulted The Avenue's owner who agreed to work being carried out on condition that tarmac not be used.



In November, Mr Lawrie was able to report to the Community Council that the Avenue project was completed on budget (£30,950), with funding being provided by Sustrans, Lochelbank CBF and SUEZ UK (previously SITA UK). In order to correct the flooding, work had needed to be carried out in the field adjoining the path, in culverts under the path and in the gully pots leading water to the drain at Greenbank Road.

There are now rodding points to allow inspection and clearing of obstructions. Residents are asked to monitor drains and report any problems. Feedback is also requested on the vehicle restriction zone now in place at the school entrance. Contact [secretary@glenfarg.org](mailto:secretary@glenfarg.org)

The CC agreed that it was an excellent result and, on behalf of the community, expressed its thanks to TRACKS. The CC also gave it's support to an Opening event being held in the spring, with the cooperation of the school.

As you walk along The Avenue now, think back to all the people who have gone before you. Mr Crawford believes that the Lodge and the avenue were built with trees planted to create the approach to what was going to be a big house. At some time, it must have been used as the route to the 9-hole golf course. Residents remember that 30 years ago you could still see the remains of the golf course greens in fields that are now home to cows.

As part of the Glenfarg History Project, Mrs Roe (formerly Deas) was interviewed about her memories of growing up in Glenfarg over 80 years ago. One of her memories concerned the Avenue. She remembers what she calls the 'pug', a little engine pulling a wagon, which she thinks ran from the station yard, round the back of the Institute and up towards the golf course. She thinks that there must have been some construction work going on, but was too young to know. Does anyone else have memories of The Avenue?

We hope that all residents will now be able to enjoy the benefits of the Avenue as a safe route to school, a short cut to home or a pleasant place to walk the dog. Which reminds me, we are asking dog owners to respect the path and the school playing fields. It is not possible to site dog bins in the Avenue itself as Perth & Kinross Council must have road access to empty them. Can we also ask dog owners not to allow dogs to run loose on the school playing fields. Teachers have been having to clear the field of dog poo before allowing the children access. The CC is therefore to investigate the erection of signs banning dogs from this area. Then we will all be able to enjoy our improved environment.

# AVON CALLING!

*37 years and still  
DING DONGing in Glenfarg!*



*Many thanks to all my customers, past and present  
Cosmetics, toiletries, perfume, gifts  
delivered to your door*

I can deliver a brochure, or you can go to  
**www.janmakeup.co.uk**,  
place your order and choose whether to have it delivered direct  
(for a small fee) or for free by me.

If you would like me to call, or for more information, contact

Jan Macpherson, Lyndhurst, Ladeside  
01577 830430, 07709 015305  
jan@janmakeup.co.uk

## DOUBLE “M” DAIRY

01738 850622 **Main Street** 01337 840820  
**Abernethy**



**We are a locally based business, supplying milk and other  
dairy products. We still deliver milk in glass bottles if you want.**

**We deliver on a Monday, Wednesday & Friday in this area.**

**Please phone us for more information.**

**A. Morren & D. Smart  
Partners**

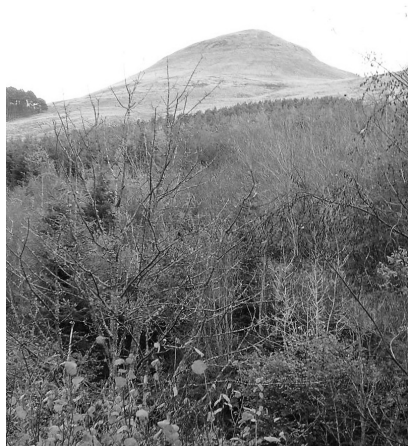
# Maspie Den Walk

Maspie Den, Falkland, is a great walk that is only a twenty minute drive from Glenfarg. It takes you through woodland and up a rugged glen to an overhang where you walk under Maspie Burn. There's plenty to interest both kids and adults with woodland, a stone tunnel, 9 or 10 bridges to cross and a magnificent Jacobean house.

Falkland was the first conservation village in Scotland and as such has a wonderful selection of old and interesting buildings with the most famous being Falkland Palace.

For the start of the walk, park in the small car park just off the A912 at the entrance to the road leading to the exotically named organic café 'Pillars of Hercules'

From the car park take the 'Red squirrel trail' into the wood. Watch out for the 'wood Stag' on your left as you go along the path! Very shortly you reach another sign post directing you left for the red squirrel trail but ignore this and turn right here, slightly downhill towards a stone bridge. Look out for the Willow faces in the trees here!



The path rises gradually towards the edge of the wood where you come out into open land with great views of the Lomond's. Across to your right you can see an Obelisk among the trees. This is a monument to Tyndall Bruce, who, in the Eighteenth century, along with his wife Margaret, were instrumental in developing the house and estate that we find today.

The path continues with a stone dyke on your right and about twenty feet along the shrubbery is less dense and if you look closely you can see the 'Talking Stanes' at intervals along this wall. See how many you can find and also how many you know the meaning of the words.

Carry on up this path until you meet an estate road; go past a young orchard and round the corner where another estate road comes in on your right. Just at this junction on your right you will see a blue sign designating the road as a national cycle path and if you take this road it goes in to Falkland passing the estate office.

However, beside the sign, between two fence posts on your right, you will see a path which takes you down to the first bridge where the path continues through the trees following the Maspie burn.

If you look up to your left you will get a glimpse of the roof of Falkland House with its wonderful tall, barley sugar chimneys. Falkland house is now a boarding and day school, providing 'education and care to boys with additional support needs.'



Follow the path under a stone bridge and you will shortly come to a stone tunnel which looks dark and mysterious. The tunnel is very short and bends to the left and once you reach the darkest part you begin to see 'the light at the end of the tunnel'. The darkness can be disconcerting so a torch or mobile phone comes in handy.

A stone bridge lies ahead with a signpost to 'The Stables', but walk past this and you will see a stone with 'Maspie den, 1/3 mile' marked thereon. Follow the path as it crosses and re-crosses the burn and slowly climbs upwards through the rocky gorge, about 30 feet or so above the burn. Soon you come to a picturesque waterfall. This part of the burn is a good spot to sight 'dippers'.



Carry on to the top of the gorge where you cross bridge number nine and arrive at the overhang, over which the burn cascades into the gorge. Walk under the overhang and under the cascade on to the top where you begin your descent.

As you descend you get a great view of East Lomond on your right. The path meets a junction where there are two paths going down and one going left to the farm, signposted 'Toms Garden Furniture'. If you go this way you can walk down the farm road.

If you want to go back through the woods then take either of the paths on your right and they will bring you down towards a stone wall with a plaque with 'Maspie den' etched on it. You will see a stone bridge ahead of you but just before take the path on the left that has a small channel running alongside and shortly you will arrive back at the original path where you can retrace your steps all the way back to the car park.

To do the full walk takes about an hour and a half but there are options to turn off at various points and do a shorter walk. Also you could park beside the estate office in Falkland and walk from there along an estate road to where you turn into the Maspie burn.

This is a lovely walk that's not far away and is beautiful in all seasons. There are plenty places for refreshments in nearby Falkland and at the 'Pillars'. Maspie den can be muddy in parts so appropriate footwear is advised.

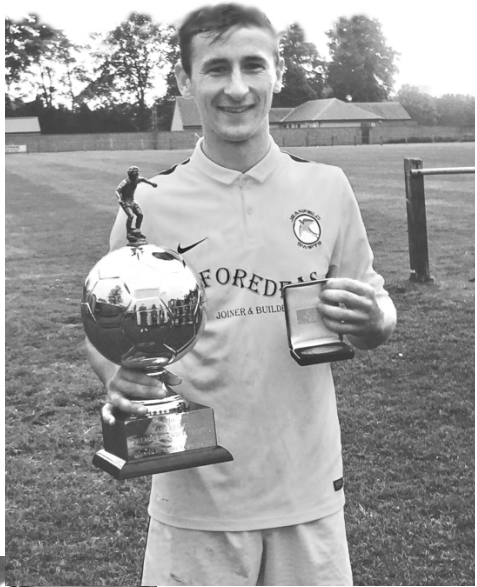
If you have any favourite walks not far from Glenfarg then please let us know by emailing them to [newsletter@glenfarg.org](mailto:newsletter@glenfarg.org).

Jim Ashton

# Chris McLeish

Dave and Helen McLeish are rightfully proud of their son Chris who has recently signed his first senior professional contract with Elgin City football club.

Chris, 24, was born in Perth but has grown up in Glenfarg. He went to Arngask primary school, then on to Kinross High School. He works as a joiner with Stephen Gardiner construction in Auchterarder, but still lives in Glenfarg.



Chris has played with three junior clubs - Scone Thistle, Newburgh and Jeanfield Swifts.

His time at Jeanfield was particularly successful. He achieved top goal scorer and Players' Player of the year in 2014/15 season.



In 2015/16 Jeanfield Swifts were GA Cup runners up and McBookie.com Premier League Champions.

Jeanfield's manager in the 14/15 season was Gavin Price, who left to be Elgin's assistant manager to manager Jim Weir. So Gavin knew what Chris could bring to the team. Chris signed for Elgin in June this year. He was originally signed as a squad player but has now earned his way into the team by playing well and has so far scored 3 league goals and 1 Scottish cup goal.

# Glenfarg Grapevine

Do you feel 'out of the loop'? Are you missing out on village news? Or are you an organiser, needing to reach as many people locally as possible?

Then you need to make use of ALL our wonderful means of communication. Please remember, these are run by volunteers. They will not copy from one medium to another - you need to make use of them all.

## Community Website

[www.glenfarg.org](http://www.glenfarg.org)

for all the information about our village

club contacts / service dates / hall calendar / group and CC minutes etc

## Facebook

join the Glenfarg Grapevine closed group  
for instant community news / details of events

## Email Service

sign up via the community website  
to receive a weekly email of upcoming events  
plus emergency announcements

## Noticeboards

The shop window is the place for general posters  
and the CC noticeboard (round the corner) for CC and Perth Council news

## Grapevine News for Non-Computer Users

we are now posting a printout of the Grapevine Email Service  
on the CC Noticeboard

## Newsletter

You're already reading it!





# HENDERSON

PLUMBING AND HEATING

Henderson Plumbing and Heating,  
based in Glenfarg, provide a professional and  
reliable service.

- \*Full Bathroom Renovations
- \*Central Heating systems
  - \*Biomass systems
  - \*Drainage
- \*General maintenance
- \*Traditional Cast iron rain water gutters
  - \*lead work

Mobile. 07703 735925

*[hendersonplumbingandheating@outlook.com](mailto:hendersonplumbingandheating@outlook.com)*



# Congratulations



Congratulations to Lisa Allison and Ardnagaish Edan in winning the Novice Ridden Mountain and Moorland Championship and the Nick Mason Memorial Salver at Blair Atholl Horse Trials.

Edan is a 7 year old Highland Pony gelding, bred and owned by George and Moira Gourdie, ridden and produced by Lisa.

The stud name Ard Na Gaisk is of Gaelic origin and means "hill of heroism" and was one of the suggested origins of Arngask (as written in the Annals of Arngask).

## **JAMESFIELD FARM SHOP**



### **CELEBRATING OVER 30 YEARS CHEMICAL FREE FRESH FROM OUR FARM TO YOUR PLATE**

Fresh Organic Produce

Homemade Baking

Delicious Steak Pies – Can be made to order

Mr C's Traditional Award Winning Pies

Highland Drovers & Puddledub Meats

Cairn O' Mohr Wines & Organic Wines and more

Fair Trade Products & Handcrafted Gifts

### **RESTAURANT WITH VIEWS OF THE TAY ESTUARY - Try Our New Menu -**

Traditional and Delicious Home Cooked Food

Vegetarian & Vegan Food Available

**Mon – Sat 9.00am – 5.00pm Sun – 10.00am – 5.00pm**

**Jamesfield Farm Shop and Farmhouse Kitchen**

**By Abernethy, Cupar, KY14 6EW**

**Tel: 01738 850 498 Email:**

**[jamesfieldfarm@btconnect.com](mailto:jamesfieldfarm@btconnect.com)**

**<https://www.facebook.com/jamesfieldfarmshopandrestaurant>**

**[www.jamesfieldfarmshopandrestaurant.co.uk](http://www.jamesfieldfarmshopandrestaurant.co.uk)**



# Glenfarg and Duncreevie in Bloom

This is a fairly quiet time of the year for actual gardening and most areas have been tidied up for winter but some jobs will always be ongoing.

We have almost completed our project which consisted of:

- 1) Installing a drive and garage for our vehicles and equipment (where did we store everything before this garage and where does it all come from!)
- 2) The wall at south verge has had all the grass removed from it, new grass sown on the verge, drainage pipes added along the verge, more bulbs planted and some perennial plants added behind the wall. We also have some wildflower seeds to be sown there. Now we just need to make sure it is maintained! This is helped enormously by our new lawn mower.





3) Some new signage to help visitors find major features in the village (Hopefully this has been completed by now)

For those who do not know, the major projects which we tackle are funded through charities and could not be done without their financial assistance. PKC also give us an

annual grant which allows us to purchase the hanging baskets and our own plugs for the various containers.

As always your support and help in and around the village is essential so please try and help out on community days or feel free to do anything you consider would be an improvement in our community. In the Spring we will definitely need to clear out the pond (again.) Watch this space for a date in the next issue.

If you would like to become involved or have any suggestions of things which could be done in and around Glenfarg and Duncricvie then contact myself:

Irene Findlay 830441 ([irene@findlayclan.com](mailto:irene@findlayclan.com))

# Glenfarg Folk Club



## Backstage At The Green in Kinross.

Doors open 7.30pm Music Starts at 8.00pm



### **North Sea Gas Monday 5th Dec**

Members £6, Non-Members £9  
A Scottish folk institution, NSG comprise Dave Gilfillan, Ronnie MacDonald and Grant Simpson. Renowned for their high-energy music, chorus songs and sheer professionalism, they have been performing now for over 30 years and always guarantee a great night out. A brilliant way to bring in December!

### **The Farg Folk Monday 12th Dec**

Members £6, Non-Members £9



Hamish Grant

After many years of performing at our Folk Feasts, tonight we welcome the current line-up of "The Fargies" to give us a full night of chorus songs interspersed with individual performances. A grand night's fun from, in alphabetical order, Mike Dow, Stan Ginter, Hamish Grant, Roy Henderson and Hugh and Lesley Toner. This is a fundraising event for Folk Feast 2017. Come and support your local lads and lass whilst helping build up the coffers for next year's Feast.

### **Singaround Monday 19th Dec**

All £3.

The final Club night of the year so please come and share some festive cheer with the rest of the gang at The Backstage. All music welcome but we will obviously be featuring songs of a festive nature!

**2017 (January 2nd & January 9th Closed)**

**Saltire (Davy Vernon & Alex Hodgson) Monday 16th January**

**Burns Singaround Monday 23rd January**

Hamish Grant

# Glenfarg Baby and Toddler Group



Come and join the fun!

Every Monday morning from 9:30-11:30 during term time a group of friendly locals with preschool age children meet in the village hall, for fun, games, and most importantly coffee and a chat.

There are many benefits to joining a baby and toddler group, not just for new first time mums but also for carers of older children.

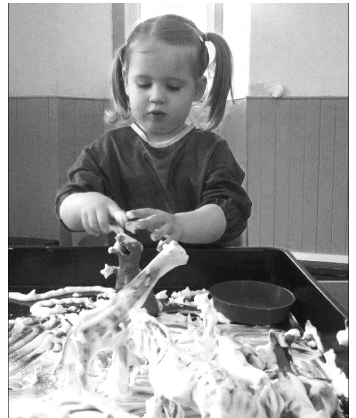
It is a great safe place to venture out to with your newborn. There are bouncy chairs, soft mats and baby toys but most importantly friendly faces who have either been there or are new to

this whole thing themselves. It can be quite isolating suddenly being at home on your own when you have been used to being out at work all day. Just having somewhere to go that is close by, where you can share your experiences, can really help to give you the confidence to get out and about with your baby.

For the more mobile children it is especially beneficial as it's a fabulous way of letting your child experiment with independence. Secure in the knowledge that you are there, young children will start to play further away, gaining self confidence and self reliance.

There are messy play sessions, arts and craft sessions as well as the usual seasonal fun. Your child will love playing with the different toys which are rotated weekly to keep their interest. There is a healthy snack and a drink halfway through to keep up the energy levels for more play.

It's also a great way to introduce sharing, the bain of every small child's life but an important developmental step. Children will start to learn social skills and meet their peers. There are strong links with the primary school which also help with the transition to starting school or nursery.



The group is not just for mums, its for Dads, Grans, Grandads, and all carers. Most importantly it is there for you, it can be daunting if you have never been to anything like that before but you are sure of a friendly welcome, a hot cuppa and a chat.

# The Famous Bein Inn

01577 830216



*Why not bring your Family, Friends or Work Colleagues along to the Bein in December for a Christmas Party? Menu is available on our website ([www.BeinInn.com](http://www.BeinInn.com)) or our Facebook page.*

*Locally sourced food  
Fine coffee beans and speciality teas  
Fine Ales and Beers on tap  
Selection of spirits, malt whiskeys  
Competitive room rates*

*The Bein Inn is open on Christmas Day 12-6pm. 3 Course Meal for £35.00 pp. Places are limited, so book now to avoid disappointment.*

*Down stairs bar open from 5 p.m. 'til late every Friday*

bookings@beininn.co.uk

www.beininn.com



# Glenfarg W.R.I.



On the 13th October Mr Barry Batchelor gave a talk on Chocolate, from its early beginnings up to the very different kinds of chocolate that we have today.

## **Competition Winners**

Favourite Jug--1st Sheila Harley, 2nd Gillian Colmy, 3rd Liz Yull.

Chocolate Muffins--1st Lynda Stuart, 2nd Alison Harrison, 3rd Liz Yull.

Flower of the Month--1st Vivian Hebblethwaite, 2nd Margot Moran, 3rd Allison Messenger

On the 10th of November Mrs Frances Drysdale gave a talk on Flower Arranging and demonstrated two different arrangements for Christmas.

## **Competition Winners**

Recycled Item--1st Margot Moran, 2nd Helen Quartermaine, 3rd Lynda Stuart

3 Canapés-- 1st Lillias Johnston, 2nd Alison Harrison, 3rd Margot Moran.

Flower of the Month-- 1st Margo Moran, 2nd Allison Messenger, 3rd Helen Quartermaine.

## **Dates of Future Meetings -- Visitors Welcome**

8th December: Christmas Party.

12th January: Scottish Fire and Rescue service.

9th February: Hands on Crochet from Mrs Mary Ramsay



# Glenfarg Village Store

*Wishing you all a very  
Merry Christmas & a Happy New Year!  
Russell, Mark & Joe.*

## *Festive Hours*

Christmas Eve	- 7am to 12 midday
Christmas Day	- CLOSED
Boxing Day	- CLOSED
Tuesday 27th	- 9am to 5pm
Wednesday 28th	- 9am to 5pm
Thursday 29th	- 9am to 5pm
Friday 30th	- 9am to 5pm
New Year's Eve	- 7am to 1pm
New Year's Day	- CLOSED
Monday 02nd	- CLOSED



Mon. to Sat. 7am - 7pm, Sun. 9am - 7pm  
Tel: (01577) 830 201

*Stepford Productions Presents.....*

*It's Chriiiiiiiistmaaaaas  
& our 6th anniversary!*



*Christmas Party at the Village Hall.*

*Saturday 17th December, 7pm to 11:30pm.*

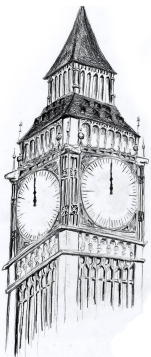
*Christmas hits, full bar & festive treats.*

*Tickets £2.50 each. Adults only.*

*Includes entry into the "Drunken Draw" at 8.30pm*

**&**

*Village New Year's Eve Party  
at the Village Hall*



*Saturday, 31st December, 7pm to 12.30am*

*Music, full bar and table snacks.*

*Adults £2.50 includes fizz at midnight.*

*Children £1.50 includes free "Kids Bar".*

*No expensive door charge, no babysitter,*

*no taxi or night bus!*

*Book early to avoid disappointment!!!*

*Two great nights guaranteed!*

# Glenfarg Community Cinema



It has been two very different experiences at the community cinema these last couple of months.

In October we had a very large audience for *The Oxford Murders*, perhaps attracted by the offer of a free glass of wine? I think it fair to say that we were 'baffled' by this film. Some made heroic attempts to follow the mathematical clues left by the serial killer, while others just gave up and enjoyed the wine and company instead. It showed in the voting!

Awful	OK	Good	Very Good	Fantastic
20%	17%	13%	5%	0%

We did however enjoy the visit by Simone Bett, Glenfarg's home-grown film producer, talking about her latest project 'First and Only'.

By contrast, in November we had a small but select audience for *Cinema Paradiso*, the Italian film that was a box office hit 28 years ago and won numerous awards including an Oscar for Best Foreign Film. I think many of our usual audience must have been patriotically supporting Scotland in their match against England that night. And many a tear was shed, either at the football or at the film!

*Cinema Paradiso* is the story of a middle-aged man recalling his childhood, when he fell in love with the movies at his Sicilian village's theatre and formed a deep friendship with the theatre's projectionist. The tears began when the elderly man selflessly forced the young man, Toto, to leave Sicily to follow his dream, and warned him never to return. In case you get a chance to see the film, I won't tell you what Toto made of his life.

Awful	OK	Good	Very Good	Fantastic
0%	0%	6%	19%	75%

I think we were all impressed by the young actor (Salvatore Cascio) who played the very young Toto. His talent and enthusiasm shone through, as was needed to portray a boy whose potential was too great for his small village. I looked up what has happened to Salvatore since. Sadly, after a few film appearances, he failed to make the jump from child star to adult actor. He now runs a restaurant and B&B named *L'Oscar dei Sapori* in his native Sicily. The name roughly translates as "the Oscar for best cooking". But the international popularity of *Cinema Paradiso* means he is still much in demand at festivals where the film is celebrated.

**December 9th EDDIE THE EAGLE**

*Biography, comedy, drama.*

The story of Eddie Edwards, the notoriously tenacious underdog ski jumper who charmed the world at the 1988 Winter Olympics. – the trailer looks hilarious!



**January 13th THE BIRDCAGE**

*Comedy.*

Robin Williams stars in this Mike Nichols re-make of the french comedy *La Cage aux Folles*

---

## Remembrance Sunday

Community Councillor Ian Pilmer lays a wreath on behalf of the Glenfarg CC. Bill Macpherson represented Arngask Parish Church and Perth & Kinross Council was represented by Councillor Willie Robertson.

The cubs and scouts were on parade.



# Lady Margaret Barclay Statue

A local preservation group has recently been working in the Arngask Old Graveyard. The group has concerns about a rare and important statue in the graveyard, that of Lady Margaret Barclay who built the original chapel. Over the years, the medieval statue has become the victim of weather erosion.

The group has taken its concerns to the Community Council and Arngask Parish Church. Arngask Church has stated that they have no interest in housing the effigy at the church and no other members of the community have expressed an interest. The Community Council is therefore proposing to offer the statue to the museums - either Kinross or Perth Museum.

If you have any thoughts on this, please contact [secretary@glenfarg.org](mailto:secretary@glenfarg.org)



## **COULD YOU TAKE OVER THE RUNNING OF GOBS?**

Dave and Kate Arnold have decided it is time for them to hand over the running of the Glenfarg Oil Buying Syndicate (GOBS).

Since they set up GOBS 5 years ago they have:

- built up the membership to 200+ members;
- organised 24 bulk buys/1600+ deliveries;
- ordered over 1¼ million litres of oil;
- ..... (most importantly) saved members lots of money.

If you have a computer, are good at organising, have some local knowledge, have good negotiating skills and a desire to help your community please contact Dave and Kate on 01577 830136 or e-mail them at [kadavar@waitrose.com](mailto:kadavar@waitrose.com)

A detailed handover and ongoing advice/assistance will be given.

# AUSTIN HEATING & ELECTRICAL

Boiler Servicing and Repairs - OIL, GAS, LPG & ELECTRIC

Aga / Rayburn Servicing & Repairs (Rayburn Guild Engineer)



Registered  
Business



Call - 07786 705261 or 01577 861188  
No Call-Out Charge

[www.austinheat.co.uk](http://www.austinheat.co.uk)



## VETERINARY SURGEONS

**CAMERON & GREIG MRCVS**

'Ardmhor', Stirling Road, Milnathort KY13 9XR



*By appointment only*

Monday - Friday

9 - 10.00am

2 - 3.00pm

6 - 7.00pm

Saturday

9 - 10.00am



Telephone: Kinross 863 494  
Website: [www.cameronandgreigvets.co.uk](http://www.cameronandgreigvets.co.uk)

Large and small animals  
24-hr emergency service



# **Earnside**

***U.K. & Continental  
Travel***

Tel: 01577 830360

E mail: [info@earnside.com](mailto:info@earnside.com)

Website: [www.earnside.com](http://www.earnside.com)



# Glenfarg Group R.D.A.

(Riding for the Disabled Association)

All is going well with riding this term with thanks to our helpers who make riding possible.



We attended the National Proficiency Test holiday at Middleton Park Equestrial Centre at Leeds August 8th-12th with 8 riders. Seven riders were assessed for the 'gold' standard for which they all received very good reports, so hope to take

the gold test next year. Our other rider passed the 'silver' test, Riding and Stable Management, so will be joining the others for gold next year.

All the riders thoroughly enjoyed themselves meeting riders from other groups and taking part in other activities in the evenings.

Wednesday September 7th was Handy Pony and Horse Care competitions as part of the Discovery Games at the Brae RDA Centre, Dundee. We had one rider who was able to attend. Cara went last year, so was keen to compete again and was very successful. She won a medal and rosette for Riding and a certificate for Horse Care.

Our group also won two entries in an Arts and Crafts competition at the RDA National Championships in July with paintings of ponies.

Angela Stocks

# Poppy Scotland Appeal 2016



A huge thank you to all of you throughout the community of Glenfarg and the surrounding area who so generously supported this year's Poppy Scotland Appeal.

The amount raised from the collecting tins in the Village shop was £245.00. An additional £46.50 was collected during the Remembrance Day service at Arngask Church, making a total of £291.50. This is an excellent donation from our small community which will help Poppy Scotland support veterans in need and their families.

Many thanks to the guys in the Village Shop for continuing to host the collecting tins. It is much appreciated.

Again, sincere thanks to all of you who supported this year's Appeal.

**Volunteer Wanted:** I am currently the Poppy Scotland Area Organiser for Glenfarg and the surrounding area. Having just paid in this year's money from our community, I am now resigning and wondered if there was anyone within the Glenfarg area who would be interested in taking over from me in this important role. If you feel this is something you could take on, please give me a call and I can explain what is involved. The duties are not onerous and you do not have to be an Armed Forces Veteran. I can be contacted on 830136 or e-mail me if you prefer at [kadavar@waitrose.com](mailto:kadavar@waitrose.com).

Many thanks.

Kate Arnold

Area Co-ordinator, Poppy Scotland

# GLENFARG NEWSLETTER PRIZE CHRISTMAS QUIZ



Had enough of eating, drinking and making merry? Fed up with trying to find new recipes for leftover turkey? Then why not have a go at our Christmas Quiz and you could win one of the following fabulous prizes.

- 1<sup>st</sup> Prize : £40 M&S Gift Card
- 2<sup>nd</sup> Prize : £30 Argos Gift Card
- 3<sup>rd</sup> Prize : £20 Village Store Gift Card
- 4<sup>th</sup> Prize : £10 Boots Gift Card
- 5<sup>th</sup> Prize : 2 Tickets for any film at the Glenfarg Community Cinema

All you have to do is answer the questions overleaf, pull out these middle pages and return your entry to the editor, Robin Watson, The Haven, Greenbank Road, Glenfarg, PH29NW **by noon on Friday 6<sup>th</sup> January 2017**. There are 30 questions covering a range of topics so everyone stands a chance. **GOOD LUCK!**

**MERRY CHRISTMAS AND A PROSPEROUS NEW YEAR**

**FROM**

**THE GLENFARG NEWSLETTER**

**OILFAST**

## **Entertainment, Music & Art**

1. Name Donald Duck's girlfriend and his three nephews?
2. Who's 2009 book, the third in a series, was entitled 'The Lost Symbol'?
3. Which Hans Christian Anderson story was the inspiration for the Disney movie Frozen ?
4. Which sculptor created the famous work "The Thinker"?
5. Who was the first ex-Beatle to have a Number One single hit ?

## **Scottish & Local**

1. On which uninhabited scottish island is Fingal's Cave located?
2. With which Scottish city is Charles Rennie Mackintosh associated?
3. Which island lies between Shetland and Orkney?
4. What is the name of the floating tourist attraction berthed at Leith Docks?
5. What is the colour of the horse's legs, one of the wooden animals in Wallace Park, Glenfarg?

## **Christmas**

1. What is the name of the period leading up to Christmas?
2. According to the 1944 song, 'All I want for Christmas is ...' what?
3. In pantomime, what is the name of Aladdin's princess?
4. How many of Santa's reindeers have names that start with the letter D ?
5. How does Good King Wenceslas like his pizzas?

## **Food and Drink**

1. The human tongue can detect 5 basic taste components. What are they?
2. The name of which curry dish literally means 'dry fry'?
3. What would you be eating if you fancied a malus pumila?
4. Udon are part of the cuisine of which country?
5. Which expensive appetiser is a product of the sturgeon?

## **History**

1. Which fashion development, named after a site in the Marshall Islands, made its debut in July 1946?
2. What is the name of the last battle in the Napoleonic Wars?
3. Who famously said 'History is bunk'?
4. In which city was General Gordon killed in 1885?
5. In which decade was daylight saving time introduced?

## **Sport**

1. What sport made a detour through Yorkshire in 2014?
2. Which motor racing circuit honoured Michael Schumacher by naming a corner after him?
3. Which "A" in golf is a shot which misses the ball completely but still counts on the scorecard?
4. What sport is played by the teams Nottingham Panthers and Dundee Stars?
5. In what sport might you perform a "ballet leg" an "ibis" or a "knight"?

When you have answered all the questions (or as many as possible), fill in your details below and return your entry to the editor, Robin Watson, The Haven, Greenbank Road, Glenfarg, PH29NW.

All entries will be marked and the one with the highest score will win the 1<sup>st</sup> prize, the second highest score wins the 2<sup>nd</sup> prize etc. If points are tied, entries will be drawn from a hat and the prizes awarded accordingly.

The names of prize winners plus the answers will appear in the next Newsletter.

**Name:**

**Address:**

**Tel No.**

Many thanks to **OilFast** of Crieff who have very generously sponsored the prizes. The company has supplied many local homes with fuel oil during 2016 via the Glenfarg Oil Buying Syndicate (GOBS).



# AndrewMegginsonArchitecture

High quality, practical and innovative  
architecture and design

[andrew@andrewmegginsonarchitecture.com](mailto:andrew@andrewmegginsonarchitecture.com)

07583 404 422



# The Viewpoint Sign



## **Viewpoint Sign Now Actually Overlooks a View!**

The Glenfarg Viewpoint sign located at the "Question Mark" on the footpath that leads from Wallace Park to Duncrievie has been moved to a new, better location at the top of the path where there is a good view over Glenfarg. This has been done because at the "Question Mark" there was no view due to the surrounding woodland!

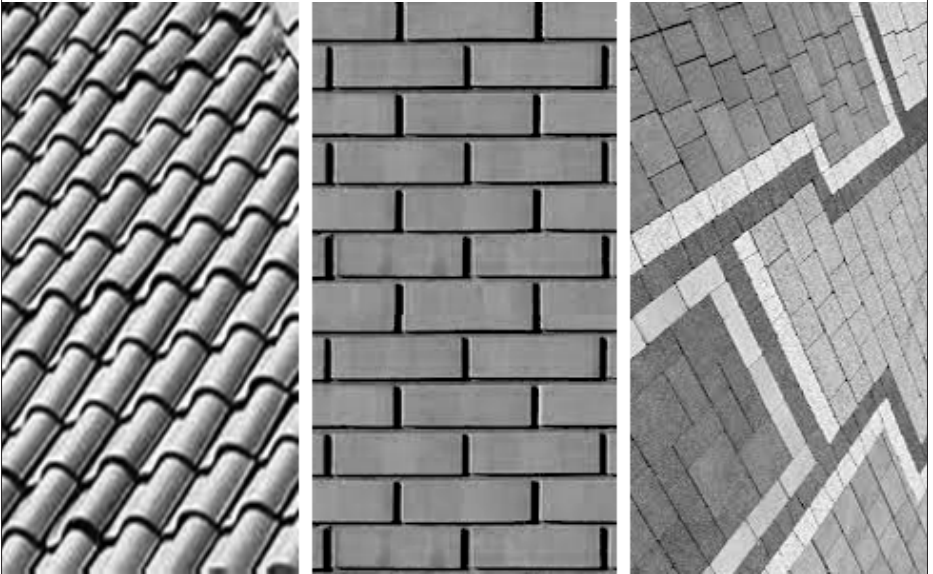
The work was carried out by the Unpaid Work Team at the request of the Community Council. The team also cleaned and re-varnished the sign and made new, taller supports for it so it can now be read more easily without having to stoop.

This is another small improvement to the area at the top of the path which has been transformed in recent years by members of BUD (Brightening Up Duncrievie) to provide a pleasant rest spot for path users.



# KINNOULL

ROOFING - BUILDING - PAVING



SLATING, TILING, CHIMNEY WORK, LEAD WORK, ROUGHCASTING  
GUTTERING REPAIRED OR REPLACED, MOSS REMOVAL  
FLAT ROOFING, NEW ROOFS, ALL BUILDING WORK CARRIED OUT  
DRIVEWAY INSTALLATION TARMAC, MONOBLOCK,  
GRAVEL, PATHS AND PATIOS INSTALLED.

LOCAL COMPANY FREE QUOTATIONS  
24HR SERVICE CALL 01738 840233  
DIRECT 07464436739

# Scouts and Explorers at Barrwood Camp



It was dusk when we arrived at the campsite and the new recruits to scouts and explorers found it challenging to pitch the tents when they couldn't see them clearly.

After breakfast there was a discussion about activities the scouts and explorers would like to do.

Each scout was paired with an explorer and raced off to find their designated orienteering points. 45 minutes later Mark and Sorbie returned triumphant to the campsite after finding all their objectives within the time.

The scouts and explorers put their pioneering skills to good use building an obstacle course before racing round it, first as individuals and then as teams.



The scouts and explorers adapted the game of man hunt to suit the surroundings. Those being hunted wore glow stick bangles to give the hunter half a chance of seeing them in the wood.

Robert and Matthew discovered the hard way that advice given by leaders to alter the way your tent is pitched isn't good for your sleep as they got very damp from condensation and consequently cold. They were up lighting the fire by the time the leaders woke.

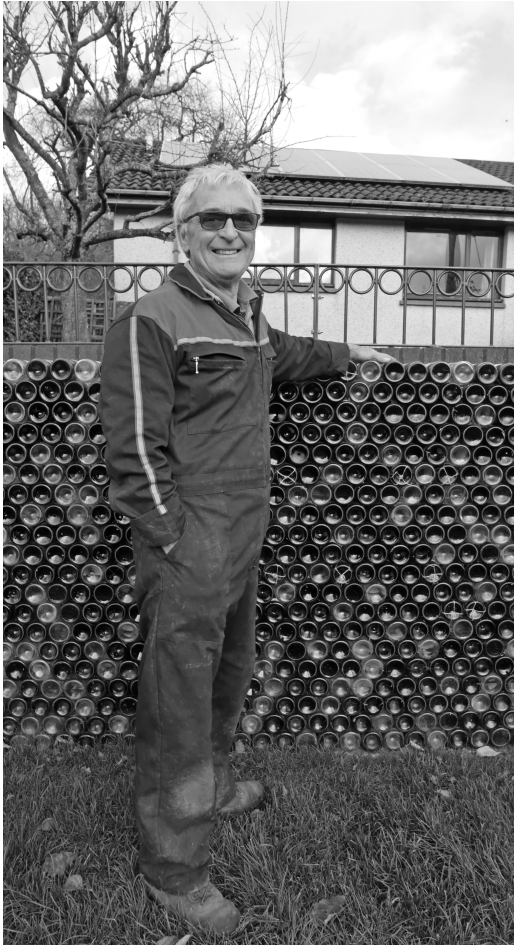
Christine took half the camp to practise their navigation and find the orienteering points they hadn't found the day before. Lewis and Matthew, new to scouts, picked up compass courses and matching the map to the terrain very quickly. Robert showed the boys how to make wooden tent pegs and woggles. After lunch we packed up and headed home with all the tents dry.

Christine Morton

# The Pontonine Wall

We moved into our new bungalow in Elm Row 29 years ago and were attracted to the location looking out to Wallace Park and open fields. The only drawback was the back garden sloped down steeply, so after a couple of years I placed gabions (large wire baskets filled with stone) along one half and levelled the garden by back filling with many tons of soil.

I had always intended building a retaining wall along the other half and 25 years later got around to doing it. I don't like to rush into things. I mused over various styles, conventional house bricks, concrete blocks with a rendered finish, railway sleepers etc but couldn't settle on any. A holiday to New Zealand was the inspiration. Whilst visiting Driving Creek Railway on the Coromandel Peninsula on the North Island we saw railway embankments retained with stacks of wine bottles with just the bottom ends showing. What a great idea and a wonderful souvenir to take home with me.



A plan was hatched. It would be a retaining wall 1.4metres high (1.9 to the pillars) and 7.9 long and strong enough to hold back many tons of earth. Footings were dug, concrete poured and blocks were laid flat to form the main body of wall. A hidden buttress midway and behind gives additional support. None of this is seen.

At either end red brick pillars laid in Old English Bond fashion flank the main wall. These continue at right angles to the main wall to form a return wall where steps lead up from the park into our garden.

Next came the fun part, laying 1,760 bottles in rows in front of the block work. The bottles are placed touching its neighbour and then the cavity around the necks was filled in with mortar to hold them together and to bind them to the block work. Metal ties add more security between the two. The next row was placed so the bottles nestled in the



space between two below. There are 20 rows/courses with 87 per row. I soon learnt that if this approach was to work the bottles had to be of similar diameters otherwise the rows would go up and down like a switch back! It is amazing how wine bottles can differ so much. Diameter, colour, punt size (the indent in the bottom), length, neck shape and so on. Luckily enough bottles were flooding in from friends and neighbours to select those that suited.

As I progressed with the construction I had various ideas of how to finish the top and settled on small metal railings along the top betwixt the two brick pillars and a matching tall gate at the bottom of the steps. The railing design of many circles to imitate bottles was Margaret's.

One of the great advantages of retirement is having time to muse over many things both practical and frivolous. One of the latter was to add some lighting just for fun. The top row of bottles and those placed randomly in the return wall each have 4 or 5 white LED lamps inside wired through a time switch. They are on from dusk to late evening.

Everything in the construction of this project has been done by me alone with the only mechanical help being a cement mixer. It has been very satisfying to see the idea come to reality and I'm very pleased with the many compliments I have received. Thank you.

I'm now dreaming of a brown Tourist Attraction sign on the A91 road stating "The Pontonine Wall". Maybe that dream won't happen!

Credits: Andy Fenwick for the name; Tim Corcorran for the loan of the cement mixer and everybody who donated many wine bottles. Without you there would be no wall.

# *Building & Repairs*

Woodmarch Kinnesswood

**Phone: 0798 374 2524**

[buildingandrepairs@gmail.com](mailto:buildingandrepairs@gmail.com)

[www.buildingandrepairs.co.uk](http://www.buildingandrepairs.co.uk)

- Roof Repairs
- Flat Roofs
- Slating
- Rhones/Guttering
- Down Pipes
- Skews
- Chimneys
- Brickwork
- Plastering
- Cornices
- Cementwork
- Ceilings
- Fascias
- Stoves
- Fireplaces
- Stonework

*All Work By Apprenticeship Served, Experienced and Insured Tradesmen.*

## Give your feet a Treat



Private podiatry/chiropractic in  
the comfort of your own  
home.

H.P.C. Registered

Lisa Allison BSc Tel 01577 830678

# Celebrating Success in 2016

**Lisa Allison** was successful at the Blair Atholl Horse Trials. See Page 20

**David and Kate Arnold** started the Glenfarg Oil Buying Syndicate 5 years ago and since then it has grown enormously, to the benefit of all its members. They also used their contacts to start an email service which has since become the Glenfarg Grapevine, now an indispensable part of local life. Dave and Kate are now looking to hand over responsibility for GOBS. See Page 32

**Lorne and Irene Findlay** are regularly seen out early in the morning and late into the evening in Glenfarg - digging, potting, cutting and planting as part of Glenfarg and Duncreevie In Bloom. When Lorne recently hurt his hand, he still continued to work on the various projects.

**Struan Hepburn** was awarded the Queen's Scout Award.

**Rosemary Johnston** was elected to the post of National Convener of the Church of Scotland Guild and began work in June. Her job consists of heading up the Leadership Team and the National Council of the Guild.

**Mark, Russell and Joe**, our local shopkeepers, have branched out with pop-up pubs. With the help of friends, coffee mornings have successfully raised money for Macmillan Nurses.

**Chris McLeish** signed his first senior professional contract with Elgin City football club. See Page 16

**Margaret Scott** works tirelessly for lots of committees in the village and is an elder of the kirk. She contributes to the WRI, the guild and BUD amongst others.

**Leigh Smith** achieved a Scottish Baking Award certificate.

**Brian Todd** ran the Edinburgh Marathon and raised over £5000 for charity.

**Andrew Vaughan** retired after giving 10 years service to the Scout Troop.

# Christmas Cake Around the World

My research into Christmas Cake turned up a number of different theories as to its origins. Many countries celebrate with some form of fruit cake, whether light, heavy, dark, dry or moist and with varying types of fruit.

One theory suggests that it was an English invention, born from a 'plum porridge' eaten to line the stomach after fasting had taken place the day before Christmas Eve. It contained fruits, honey and spices. This eventually became a plum pudding. In the 16<sup>th</sup> century, in place of oatmeal, people started to add butter, flour and sugar to make a 'boiled plum' cake. Almonds were also added along with marzipan following the recipe of a popular Easter cake but with the addition of exotic spices to represent the Three Wise Men.



More recently, cake designers have branched out with alternative Christmas cake designs like this penguin and igloo example.

In Scotland, the Dundee cake is popular, with its addition of whisky. The only fruits normally found in this cake are currants, raisins, sultanas and cherries. With its light and crumbly texture it's also a good choice for people who are not fans of very rich and moist fruit cakes.

In Yorkshire, cheese such as Wensleydale is sometimes eaten with Christmas cake, as it is with other fruit cakes.

You will find people in the US giving fruitcakes as gifts at Christmas, but they don't call them Christmas Cakes! In Canada, however, they have Christmas cakes just like the UK.

In Japan it has become popular to have a 'Western style' plain sponge filled with whipped cream, decorated with strawberries and Christmas chocolates, with a Santa decoration. Nowadays all shapes and sizes of such cakes are made in Japanese confectioners' shops which have become very competitive with their designs.

European versions include the German Stollen cake and Italy's Panettone, which I can recommend using in a 'bread and butter pudding' type of way, handy if you've been given one as a present and finding it hard to work your way through. France has the Yule Log cake as a tradition, this has also become popular in the UK, for example as a chocolate and cream-based pudding at Christmas dinner. I can recommend Delia Smith's log which is filled with a delicious chocolate mousse and whipped cream.

Whether yours is a home-made cake, supermarket bought, or individually baked and decorated by a professional, I hope you all enjoy your cake this Christmas. Have a lovely festive season.

Leigh Smith



# LEIGH SMITH CAKES



Bespoke Cakes with a 'Wow' Factor



View a selection at  
[www.leighsmithcakes.co.uk](http://www.leighsmithcakes.co.uk) and on  
Facebook 'Leigh Smith Cakes'

Luxury hand-made Christmas cakes available  
Don't forget to book your celebration cakes  
for January and February!

The Spinney, Duncrievie Road, Glenfarg  
Tel: 01577 830256 Email: [info@leighsmithcakes.co.uk](mailto:info@leighsmithcakes.co.uk)

# **Your chance to speak out – tell us....**

As a Community Council we have been asked to gather some views from our local community about what could be better. We need you to tell us anything you think would make a difference to you and your family. Some examples below have been recorded already but surely the people of Glenfarg have more to add....

Councillor Dave Cuthbert was recently at the first meeting of the Kinross and Earn Action Partnership where 3 questions were asked:

1. What is it like to live in the area?
2. What is working well?
3. What could be better?

Interestingly, the first two questions were answered fairly briefly. The third question on "what could be better?" raised over 30 points, these being (in no particular order):

- Dissatisfaction with maintenance of Council Housing
- Affordable Housing
- Stigma- Kinross a divided community (affluence)
- Empty buildings and sites lying unused
- Travel distance for specialist health services
- Disabled Access
- Speeding
- District Nurse
- Education for less academic pupils
- Need for low-cost supermarkets
- Local Community Hub
- NHS/PKC engagement
- Activities and services for older people
- Footpath clearing and verge cutting at junctions
- More resources for Youth Work
- Adult Education
- Lack of venues and drop-ins for young people
- Campus Facilities
- Links with other local authorities to support young people
- Low wage economy
- Footpaths linked up
- Safe cycle routes
- Better rural broadband
- Lack of local employment
- Cost of local and national transport
- Mental Health Provision
- Hospital Services and ambulance times
- Home Care Services
- Timing of buses
- Planning decisions recognising local views

The more information we can send back to our Councillors, the fuller the picture we can form and the better the outcome will be. Please send any suggestions to any member of the community council or via the secretary email: [secretary@glenfarg.org](mailto:secretary@glenfarg.org)

We will raise this at the next Community Council meeting on 9<sup>th</sup> January so please send in any suggestions by 5<sup>th</sup> January 2017 Thank you



# **Senses** (Est 2008) **Health & Beauty Ltd.**

AWARD WINNING SALON

**Embrace care and pleasure, science and nature, essential richness and results. Senses holistic approach merges with the most advanced research to offer the ultimate sense of beauty and well-being.**

Senses offers a wide variety of treatments including waxing, manicures, pedicures, shellac, Rockstar nails, reflexology, Indian head massage, maternity treatments, organic treatments, facials, massage treatments, body treatments, tanning treatments, makeup, and much more.

Pamper Packages, Gifts and Gift Vouchers also available.

#### **OPENING HOURS**

**TUESDAY - FRIDAY - SATURDAY : 9:30am - 5:30pm**

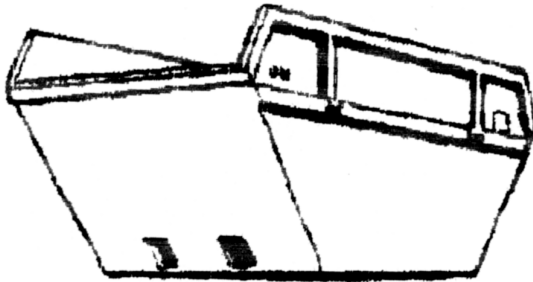
**WEDNESDAY - THURSDAY : 9:30am - 8:00pm**

**Senses Health & Beauty Ltd.  
Front Row, Aberargie, Perth PH2 9NB  
(Just outside Abernethy)**

**Tel: 01738 851023**  
**[www.senses-salon.co.uk](http://www.senses-salon.co.uk)**



# Binn Skips



Binn Farm • Glenfarg • Perthshire  
PH2 9PX

**Tel. 01577 830 833**

Fax. 01577 830 488

## ARE YOU READY FOR WINTER / EMERGENCIES?

With winter approaching and the first snow falling on Scotland, here is some advice and suggestions to help you prepare for a bad winter and emergencies:

- If you lost your electricity supply : How will you see in the dark? How will you keep warm? How will you cook food? Do you have a log burner or a coal fire? Do you have cylinder gas?

Think about having torches (and spare batteries) handy or camping type lanterns. Consider also camping gas cookers and portable gas heaters.

Do you have a caravan you could use or can you go to a relative, neighbour or friend?

Consider whether you need a portable generator and whether you want to be able to connect it directly into your electrical circuits (our local electricians can advise).

- Keep enough food, water and other essentials in your home to last at least 3 days. Tinned and dried foods are ideal as they have a long shelf life.

Remember, if you lose your electricity supply your refrigerator and freezer will no longer work.

Think about how you will cook/reheat food if you have no electricity.

Don't forget your pet(s) – keep a couple of extra tins of pet food in your cupboard.

- If you lose your electricity supply you will also lose your television, mains radio and probably your internet connection and landline telephone. So think about how you will keep in touch. If you have a mobile phone and a storm is forecast, keep it fully charged and use it sparingly in case the electricity is off for several days.

Do you have a battery powered or wind up radio so you can listen to local news and warnings? Again, don't forget to have some spare batteries.

Keep emergency telephone numbers handy: NHS 24, Scottish Hydro, Scottish Water, etc. (All these are listed in the Glenfarg Newsletter).

- Do you know how to turn off your water supply and your electricity supply in an emergency?

- Do you have a snow shovel and some salt readily available?

- Driving/travel: If the weather is really bad you should consider whether you need to travel. If you cannot postpone your journey:

- Check the weather forecast and road conditions;
- Allow extra time;
- Take a fully charged mobile phone;
- Ensure your car is ready for severe weather and consider fitting winter tyres;
- In your car carry: an ice scraper and de-icer, a torch, warm clothes and a blanket, a first aid kit, battery jump leads, a snow shovel, food and a warm drink in a flask

- Finally, please remember Glenfarg is a community, we help each other: if it is safe to do so, check on your neighbours, particularly if they are elderly, alone, vulnerable or have young children. Help each other to clear snow, do shopping, collect medicines, etc.

Further advice can be found online at [www.readyscotland.org](http://www.readyscotland.org) and on our village website, [www.glenfarg.org](http://www.glenfarg.org) – where you will find the Glenfarg Emergency Plan. Also all homes in the community have received (or will receive) a copy of the "Safer Communities" booklet which contains a lot of useful information; please take a few minutes to read it and retain it for future reference.

# **M G Plumbing & Heating**

Professional and Friendly Service

Bathrooms to Boilers (Oil, Gas, LPG)

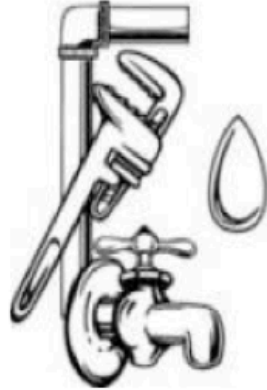
Guttering to Ground Source Heat Systems

Fully Insured

2 Year Guarantee on all work

Based in **Glenfarg** covering Tayside & Fife

**Tel 01577 830307**



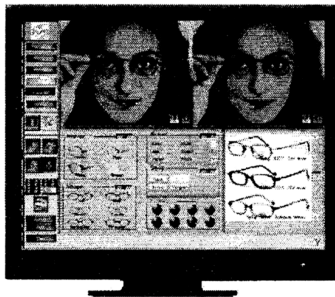
## **FERRIER & MACKINNON** OPTOMETRISTS

74 High Street, KINROSS KY13 8AJ Tel: 01577 864 009  
27/29 Chalmers Street, DUNFERMLINE KY12 8AT Tel: 01383 721 502

We are a family firm of Optometrists dedicated to professional, quality eyecare.

Introducing our new

**FRAME  
IMAGING  
SYSTEM**



SEE YOURSELF  
WEARING A FRAME  
BEFORE YOU  
ORDER ANY  
SPECTACLES!

WHY NOT POP IN FOR A  
DEMONSTRATION - WE  
WOULD BE PLEASED TO  
SEE YOU.

Opening hours: Monday to Friday 9.00am - 5.30pm  
Saturday 9.00am - 5.00pm

# GLENFARG COMMUNITY COUNCIL

## MINUTES OF MEETING

Monday 7<sup>th</sup> November 2016

Glenfarg Village Hall

**PRESENT:** CCllrs Arnold, Burlison, Pilmer, Ponton , Taylor, Warder, Watson

Also present - Cllr M. Barnacle, D. Cuthbert, W. Robertson and 2 members of the public. George Lawrie of TRACKS joined the meeting later.

**APOLOGIES:** CCllrs Horsman & Loudon, Cllr Giacomazzi, PC Atholl Spalding

### MINUTES OF THE LAST MEETING

A member of the public pointed out an error in the section on the Social Hub Working Group , and the following sentence was removed –

*However, the building would need to be on the market.*

### MATTERS ARISING:

Wallace Park Storage CCllr Warder reported that she had made enquiries about storage for the marquee and had been quoted £100 per calendar month. It was agreed that this was not an option. Cllr Cuthbert stated that KLEO may purchase an extra container in the future which would provide more space. CCllr Burlison asked the size of the marquee as he may be able to offer storage.



We don't just sell you a stove  
We offer you a lifestyle...

**STOVES**

All the main manufacturers of stoves are available and we can source almost any stove. To mention just a few Charnwood, Stovax, Hunter, Di Lusso, Firefox, Adura, Arrow. Pop in to the showroom and see the stoves up close.

**SPARES**

Replacement Glass, Firebricks, Rope seals and Spare Parts are all available and can be fitted by our trained engineers in your home. Flexible liners (15 yr guarantee) and chimney systems available for the self-installers.

**INSTALLATION**

Our Hetas trained engineers can fit the stove of your choice after carrying out a FREE site survey. You don't have to buy a stove from us. We can fit your own stove - subject to suitability. All building works carried out by our tradesmen.

**FUEL SUPPLIES**

We stock kiln-dried hardwood logs (<20% moisture) supplied in handy nets or in bulk from our specially designed tipper trailer. Kiln dried kindling and eco-logs (briquettes) made from hardwood supplied in 10kg bags. Delivery service available.



Showroom & Workshop 62 Muirs - Kinross KY13 8AU

Tel: 01577 330526 Mob: 07885 722125

W: [www.stovestuff.scot](http://www.stovestuff.scot)

E: [craig@stovestuff.scot](mailto:craig@stovestuff.scot)



FOR A FREE  
SURVEY CALL  
US TODAY



It was questioned whether the marquee is still needed, as the Fun Day did not make use of it. CCllr Taylor reported that the fete committee is to meet in January to decide on next year's event. It was decided to keep the marquee for another year.

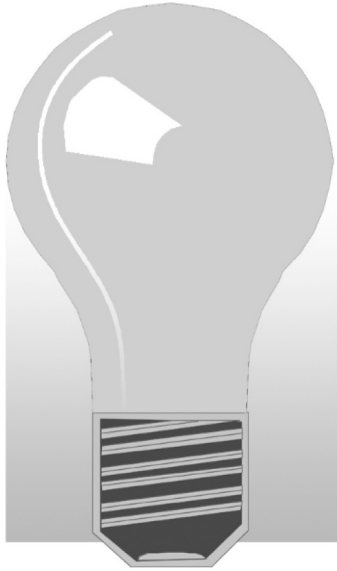
Tree Replacement in Wallace Park A member of the Tennis Club reported that planting would be carried out before the end of the year and the CC would be supplied with the plan.

Bus Timetables CCllr Pilmer is to arrange a meeting with Andrew Warrington (PKC) to discuss the matter. CCllr Ponton had asked residents with particular concerns to contact her, and they will also be invited to the meeting.

Vision & Wallace Park CCllr Ponton had asked residents interested in forming a Wallace Park Development Group to contact her. A meeting is to be held. An article on the results of The Vision, which has led to the forming of this group, will appear in the newsletter.

Glenfarg Information Sign CCllr Arnold reported that he had made a request to the Community Payback Team, who had inspected the site. The sign is to be removed to their workshop for renovation before Christmas. New materials may be required, and the CC would need to meet the cost. (*Post-meeting update – work completed*)

Wall on Main Street CCllr Watson reported that contractors arranged by BEAR had repaired this. It was noted that they had made an excellent job of this.



# *John Allison*

## *(electrician)*

*'Ardblair', East Blair,  
Glenfarg, Perth PH2 9QL*

*Tel: 01577 830 678*

*Mobile: 07717 791 484*

*Email: [johnwallison@btinternet.com](mailto:johnwallison@btinternet.com)*

*All types of electrical work undertaken*

*Also:*

Oil and gas central heating faults ~ Telephones  
Computer network cabling ~ TV aerials and  
distribution ~ Satellite re-alignment, alterations and  
distribution ~ Wall mounted TVs installed

***FREE ESTIMATES/ADVICE***

**SOCIAL HUB:** Councillor Ponton explained that the Glenfarg Community Company has superseded the original Social Hub Group and is exploring all alternatives. On the matter of the hotel, a solicitor's letter asking if the hotel building was for sale had been sent to the owner. The reply had been non-committal, simply enquiring about the funds available to the Glenfarg Community Company.

A second application for a Community Right To Buy is in progress and, as it has overcome the reasons for the original rejection, it is believed it will be successful.

As it is important to show that the community is also making an effort towards creating a social hub, fund raising events are being planned.

**OLD CHURCHYARD MAINTENANCE:** Arngask Church has decided that they have no interest in housing the effigy at the church. Despite an article in the newsletter, the community has showed no other interest. If the effigy is left in the churchyard it will further deteriorate. It was therefore thought that it should be offered to the Perth Museum. Councillor Robertson also thought that the Kinross Museum was an option and will speak to them. It was decided to highlight the possibility of a move in the newsletter, to ensure there were no objections.

**THE AVENUE:** In the absence of Mr Lawrie, who was attending another meeting, it was reported that path and fencing were in place. It was agreed that this was an excellent result and a letter

# ALPHAVET VETERINARY CENTRE

39 High Street, Kinross, KY13 8AA

For a caring professional service for all domestic pets



**TELEPHONE 01577 863 328**

E-MAIL: [alphavet@alphavet.co.uk](mailto:alphavet@alphavet.co.uk)

WEBSITE: [www.alphavet.co.uk](http://www.alphavet.co.uk)

Scotland's 1st Veterinary Practice Website!

Consultations by appointment

Monday to Friday 9.00am to 12.00 noon  
and 4.00pm to 6.00pm

Saturday 9.00am to 12.00 noon

Reception is open: Monday to Friday 8.30am to 6.30pm  
and Saturday 9.00am to 12.00 noon



*For our 24-hour Emergency Service  
please telephone 01577 863 328*



**KEEP  
CALM  
I'LL DO  
THE  
IRONING**

*Sophie Dingle*

07786 245 800  
Glenfarg, Perthshire

24 - 48hr Turn around  
Free collection and delivery  
minimum order £8



**YOU CAN ADVERTISE HERE**

**Advertise your business  
in the**

**Glenfarg Newsletter**

Annual prices - 6 issues

Full Page £70

Half Page £35

Quarter Page £20

Single issue advert prices available on  
request.

of thanks should be sent to TRACKS. (Secretary)

Members of the community had requested lighting and dog bins. It is known that neither is possible – no lighting for the Avenue area, and PKC must have road access to empty the bins.

**PLANNING:** CCllr Pilmer reported on applications since the last meeting.

### Applications

16/01724/FLL. Erection of Dwelling house on site of former lock-up, Greenbank Road, Glenfarg (No CC objection).

16/01699/FLL. Extension to Dwelling house Katiesdyke, Newfargie, Glenfarg (No CC objection).

16/01655/IPL. Erection of dwelling house, stable and horse breeding unit (in principle), land 400 metres south of Brampton House, Glenfarg (No CC objection).

16/01645/FLL. Erection of electrical substation and hard standing, Temple Hill Windfarm, Glenfarg ref: 14/02051/FLL & 15/00670/FLL (No CC objection).

### Refusals

16/01142/FLL Dwelling house on land 100m NW of Glendyburn Steading, Glenfarg (No CC objection).

### Enforcement Notices

Agricultural building in the Hilton of Duncricvie area. This matter has progressed with the Agricultural building being relocated on land opposite the original site.

# YOUR LOCAL PLUMBER

**NO CALL OUT CHARGE - NO JOB TOO SMALL  
DISCOUNT FOR SENIOR CITIZENS**

- Boilers - New Installations, Repairs and Servicing (OIL, NG & LPG) & Landlords Safety Certificates
- Bathrooms - New Installations, Upgrades & Shower Repairs
- Central Heating - Radiator valves repaired & replaced, system descale & flush, new radiator installations, Under floor heating, Fitting of gas hobs & cookers
- Dripping Taps - Outside Taps - Plumbing in washing machines & dishwashers - Toilet Repairs - Drains etc



**DOUGLAS MILLER  
01577 861623**



# Stewart Funeral Directors

14 High Street, KINROSS KY13 8AN  
Tel. (01577) 864607



**Modern Hygienic Preparation Room  
Private Family Viewing Suite  
24 Hour Personal Service  
Specialist Ambulance Transfers  
Funeral Planning Consultations  
Memorial Sales by Regency Memorials**

**24 Hour Emergency Service Tel. (01577) 864607**

### Consultation matters

Home Office National Emergency Services Network 5143 - Pre-Consultation for the Proposed Telecommunications Mast at Whitehill Farm, Path of Condie.

The Home office in conjunction with the national communication service provider, EE, have proposed that an additional Telecommunications Mast is required for improved coverage for emergency service providers e.g. Police, Fire and Ambulance. In addition, the 2017 4G coverage shall be improved for the area. The proposed mast location is in the vicinity of Whitehill Farm on the Path of Condie road. I add further that there are no specific details about the mast itself although this should be made apparent in a Planning Application shortly. In conclusion, this Home Office activity for a National Emergency Services network, via a new Telecommunications Mast, will be accepted by P&KC.

### Stephen Builders site adjacent to Wallace Park

Although there has been excavation activity and a hard standing entrance constructed adjacent to the main road, the builder's agent assured the CC that no construction work is planned for the foreseeable future. When construction is due to begin the CC shall be notified.

Some concerns were expressed about the derelict state of Smithy Cottage, Greenbank Road and Cllr Robertson offered



**AVAILABLE 7 DAYS A WEEK  
LOCAL RELIABLE PROFESSIONAL  
SPEEDY SERVICE FOR EMERGENCIES**

All pests professionally dealt with  
Free Surveys Fully Insured  
Domestic Commercial Agricultural  
Contract work or One-off visits

rats • mice • moles • rabbits • squirrels  
flies • fleas • bedbugs • wasps • bees • ants  
moths • spiders • insect infestations • rabbit fencing  
bird proofing • pest birds • all other problem pests

Call us for all your pest problems.  
We also install all types of bird-proofing.

**01738 813751**

**07767 353535**

[www.andylawpestcontrol.co.uk](http://www.andylawpestcontrol.co.uk)



Bridge of Eam, Perth.



advice.

### Glenfarg Phone Box

Communication has been received from the Development Manager, PKC, regarding the phone box at the junction of Main Street and Greenbank Road. The CC has previously lodged an interest in taking over this box for £1 at some time in the future. BT is now proposing the removal of boxes no longer viable which have not been adopted. Comments should therefore be sent by 21<sup>st</sup> November. It was decided to reiterate our interest and ask for details of any future costs / liabilities. (*Secretary*)

### **THE AVENUE (continued):**

George Lawrie from TRACKS joined the meeting. He reported that the Avenue project, under the Safe Routes to School scheme, was completed on budget (£30,950). Funding had been provided by Sustrans, Lochelbank CBF and SUEZ UK (previously SITA UK). The school is still awaiting a new bike shed. Mr Lawrie thanked two members of the community who had been instrumental in pushing this project through.

The flooding problem had required work to be carried out in the field adjoining the path, culverts under the path and the gully pots leading water to the drain at Greenbank Road. There are now rodding points to allow inspection and clearing of obstructions. Residents are asked to monitor drains and report any problems. Feedback is also requested on the restriction zone at the school.

# J. Stewart & Son

## Landscaping and Paving



Landscaping and Ground Works



Ask about turfing

ALL WORK IS CARRIED OUT BY TRAINED CRAFTSMEN  
AND IS FULLY GUARANTEED

Call for a **FREE** no obligation estimate

**Tel: 01738 245465**  
**Mob: 07516 595192**

Quality just can't get any better!

**LANDSCAPING & DRIVEWAYS**  
Monoblock • Stone Paving  
Slabbing • Decking  
Sandstone Walls • Re-rendered  
Drainage • Gravel • Cobbles  
Heritage • Cotswold Drives  
Patios & Paths • Parking Areas  
Land Engineering  
Tidying and Full Garden Service  
Tree Surgery

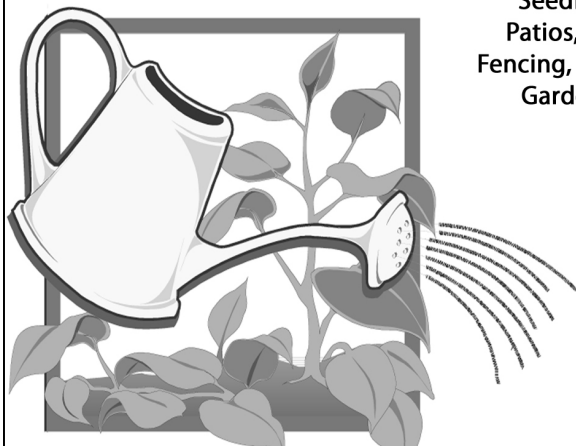
# Brian Todd Landscapes

1 Ash Grove, Glenfarg

Contact: 01577 830 728

or 07718 916 318

Seeding, Wall Pointing, Repairs,  
Patios, Driveways, Hedge Cutting,  
Fencing, Gutters cleaned and repaired,  
Garden Maintenance, Slabbing  
& all other odd jobs



**FREE**  
**ESTIMATES**  
**COMPETITIVE**  
**RATES**

The CC gave it's support to an Opening event being held in the spring, with the cooperation of the school.

**POLICE REPORT:**

No police officer was present and no report had been received.

**TREASURER'S REPORT:**

GCC Balance on Account £70.18 (plus Admin Grant from PKC)

Expense: Village Hall £12, Remembrance Wreath £31.50

GCC Newsletter Account £11,265.51

Income since last meeting – newsletter donations and advertising revenue £255

Expenditures since last meeting – printing of October newsletter £190.

School Fund £441 No change

Total funds held £11,776.69 at 4<sup>th</sup> November 2016.

**AOCB:**

Motorway footbridge The ground on the far side of this bridge is extremely muddy, causing problems for walkers and cyclists. Cllr Robertson to contact Roads Dept.

Path to Duncreevie from Wallace Park needs foliage cut back. Greenspace to be contacted. If no success, Community Payback to be approached. (Secretary)

Wallace Park A member of the public suggested a circular path around Wallace Park. CCllr Ponton replied that this would be for the Development Group to consider as part of an overall plan for



## TYREFAIR LIMITED

Unit 11  
Bridgend Industrial Estate  
Kinross

There is now a specialist tyre and battery dealer in Kinross that opens every day of the week, and has tyres and batteries at prices to suit your budget. **TYREFAIR** is a family business, with staff that have many years of professional experience in the tyre trade, and you can find them at **Unit 11, Bridgend Industrial Estate, or telephone on KINROSS 865656**. **TYREFAIR** welcomes trade account and offers the following goods and services:

- New tyres for cars and vans
- Guaranteed re-treaded tyres
- 4x4 tyres for business and leisure
- High performance tyre specialists
- Wheel alignment
- Top brand quality batteries
- Puncture and Vulcanised repairs
- Number plates made while-you-wait

**TYREFAIR** has a comfortable lounge, where you can relax while the work is carried out and you can rest assured that we will treat your vehicle with the care and respect that you demand.

**WHY NOT CALL IN, OR TELEPHONE NOW FOR MORE INFORMATION?**

**KINROSS (01577) 865 656**

## Alistair Hutcheson Floorlayer

**All types of flooring supplied and installed**  
Carpets, Carpet tiles, Domestic and Commercial Vinyls  
Karndean, Amtico, Laminates And Entrance Matting

Tel. 01577 862876  
Mobile. 07842277590  
Email - alijamhut@aol.com

Flatpack Furniture Assembled  
Prices from just £ 5.00



## Woodlands Bed and Breakfast

Church Brae, Glenfarg

[www.woodlands-bandb.co.uk](http://www.woodlands-bandb.co.uk)

Off Church Brae at end of lane below church

Ample car parking.

Two double bedrooms with king size beds

Resident's lounge

To book phone Cedric or Heather Wilkins

**01577 830300**

the park. TRACKS would be able to help with this.

Dog Dirt, There has been a significant rise in this problem in Greenbank Road. The dog warden has been contacted in the past. Cllr Robertson to follow up.

It was also noted that some dog owners allowed dogs to run loose on the school playing fields. Dog Warden to be asked if signs could be put up banning dogs. Newsletter to carry information on this.

*(CCllr Watson)*

Remembrance Service CCllr Pilmer offered to do the reading and lay the wreath on behalf of the CC.

Ladeside Build Out Following safety concern about the Ladeside / Main Street junction, plans for a build-out have been made available to the CC by PKC.

Main Issues Report (Planning) Cllr Barnacle reported that the delay in the period of consultation means that the CC could still feed in any thought eg regarding parking in the village. There was some discussion on the possibility of a one-way system in Greenbank Road. This has been considered in the past but the Road Safety Officer had advised against on the grounds of increased speeds. Cllr Robertson noted that the changes to Victoria Road, Milnathort had not resulted in speeding.

**The next meeting of the Community Council will be held on 9th January 2017.**

## **THINK-A-HEAD Hairdresser**

Hairdressing done in the comfort  
of your own home by an  
experienced stylist

**Cut & Blow Dry  
Tint, Foil Highlights  
Perms**

**Special Rates for  
OAPs and children**

Call Elaine on 01577 840043



*For all aspects of*  
**PIANO TUNING**  
*and repair*  
**David R. Watt**  
**(01577 830 345)**

Genuine Hardwood logs by  
the trailer-load or part load.  
Logs cut, split and delivered  
to suit individual needs.

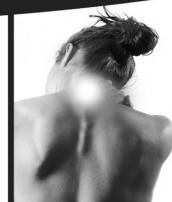
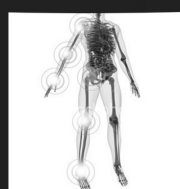


For further  
details ring  
Ewan  
Cheape  
Glenfarg  
830 349

# KINROSS Physiotherapy



- **SPRAINS/STRAINS/TEARS**
- **LOWBACK/NECK PAIN**
- **HIP/KNEE/ARM PAIN**
- **GOLFER/TENNIS ELBOW**
- **TENDON INJURIES**
- **ARTHRITIS**
- **TMJ (JAW PAIN)**
- **POST FRACTURE OR DISLOCATION**
- **REHABILITATION FOLLOWING SURGERY**



## **OPENING TIMES**

**MON - FRI  
10am - 9pm**

**37 New Road, Milnathort  
Kinross KY13 9XT**

**01577 864875  
07912 100 845**

**[enquiries@kinrossphysiotherapy.co.uk](mailto:enquiries@kinrossphysiotherapy.co.uk)**

# **ELSTON LANDSCAPES**

**EST. 1983**

\*Tree & Shrub Planting - Complete Layouts

\*Patos, Paths, Driveways

\*All Types of Fencing & Gates

\*Pruning, Hedge Cutting & Tree Surgery

\*Terracing, Raised Beds & Sleeper Walls

\*Operated Plant Hire for Mini Digger,  
Dumper & Turf Lifter

**\*Tree Stump Removal Specialist**

For more information visit

**[www.elston-landscapes.co.uk](http://www.elston-landscapes.co.uk)**

or

Contact Keith Elston on

**01738 850742**

Email **[keith@elston-landscapes.co.uk](mailto:keith@elston-landscapes.co.uk)**

**Expertise / Quality / Peace of Mind**



# **WEBSTER BUILDING SUPPLIES LTD**

*Building and  
Timber  
Supplies*

*Bricks, Blocks, Sand & Gravel, Decorative  
Aggregates, Roughcasting, Plasterboard,  
Pavers, Kerbs, Slabs, Fencing Materials,  
Timber, Plywoods, Drainage,  
Roofing Materials*



*Stockists of FLO GAS. Deliveries  
throughout Tayside and Fife.*

**Ladeside Yard, Stirling Road  
Milnathort KY13 9XR  
Tel: 01577 864369 Fax: 01577 864046**

# General Information

## Doctors' Surgeries

Loch Leven Health Centre, Muirs, Kinross - **01577 862 112**

Daytime emergency number - **01577 865 252** - NHS 24 Out of Hours - **111**

The Surgery, Main Street, Bridge of Earn - **01738 812 000**

## Library



The van visits the village and stops at Main Street  
on every Tuesday from 12.30 to 1pm

## Bank Of Scotland

Stops at Glenfarg Hotel Wednesday 10.05am -10.15am



## Mobile Post Office

Stops outside the Joiner's workshop, Ladeside

Mon 11am-12noon;

Wed 11am-12noon;

Tues 12.45pm- 2.15pm;

Fri 12.45pm - 2.15pm



## Recycling Points

**Glenfarg:** Arngask School car park for cans, paper and glass

**Kinross:** Causeway Car Park, Sainsbury's, Station Road, for cans, glass, paper and textiles.

Bridgend Industrial Estate Open Mon-Fri 9am-7pm, Sat-Sun 9am-5pm

**Milnathort:** Thistle Inn, Black Loan for cans, glass and paper

Orwell & Portmoak Church Office for cans, plastic, paper and ink cartridges

**Perth:** Tesco, Edinburgh Road for cans, glass, paper, textiles and books

## Kerbside Recycling Service: Waste Collection Dates

### Glenfarg

**Green lidded bin** (Non-recyclable waste)

Fridays: December 9th & 23rd, January 6th & 20th

**Blue lidded bin** (Paper, cardboard, cans, plastic)

Fridays: December 2nd, 16th & 30th, January 13th & 27th

**Brown lidded bin** (Garden & food waste):

Thursdays: December 8th & 22nd, January 5th & 19th

### Duncrievie

**Green lidded bin** (Non-recyclable waste):

Thursdays: December 8th & 22nd, January 5th & 19th

**Blue lidded bin** (Paper, cardboard, cans, plastic):

Thursdays: December 1st, 15th & 29th, January 12th & 26th

**Brown lidded bin** (Garden & food waste):

Saturdays: December 10th & 24th, January 7th & 21st

